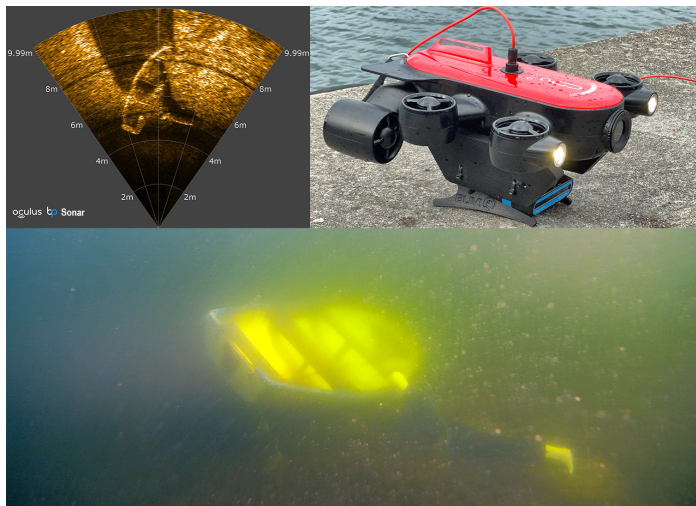




GT1 mini ROV

GT1 mini ROV is an underwater drone that is small and competent

GT1 mini ROV is a small underwater drone that goes down to 175 meters. Its small size may be preferable for some underwater missions where other models become too large. With the many accessories that can be connected to the GT1, it becomes very versatile and competent. Perfect when it needs to be quickly and easily searched at the seabed for Rescue Service SAR, Maritime Police, Customs, Defense and Sea Rescue.



GT1 mini ROV

Used today by many services including rescue. Modern competent technology.

A simple, competent and very affordable ROV

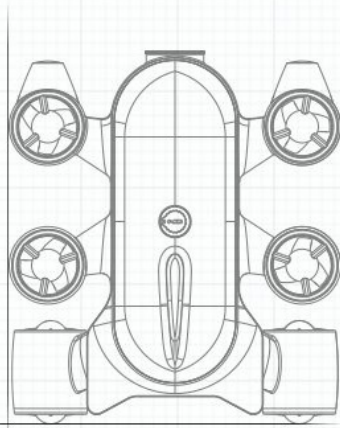
- Quick and easy deployment
- Easy to understand and manage
- No external power source required
- Easy equipment to bring

With sonar as an accessory, the ROV's powerful LED lighting and HD camera as well as the ability to lie down at a stepless angle of +/- 60 degrees, this ROV will fit well when you need to quickly look at something below the surface.

GT1 mini ROV is also a working tool for inspections at berths and other constructions with limited space as its small size means that it can get through narrow spaces. GT1 mini ROV is equipped with 6 engines, has both auto direction and auto depth, films and photographs in 4K UHD.

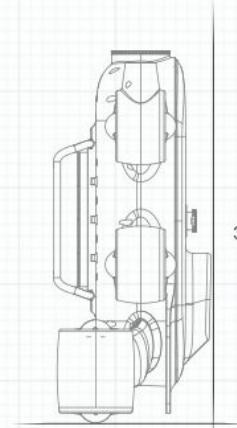


390mm



347mm

390mm



165mm

ROV

- Weight 4.4kg
- Dimensions 14.96x13.70x6.61"
- Max Depth 175m/574ft
- Max Speed 2m/s
- Max Ascend/Descend Speed 1m/s
- Flow Resistance 4kn 2m/s
- Max TiIt Angle 60°
- Battery Capacity 9000mAh/97.2Wh
- Duration 4hours With External
- Battery 8hours
- Light 1500LMx2
- Internal Storage 128GB
- Operating Temperature Range -10~50°C, 14~122°F

CAMERA

- Sensor 1/2.3"SONY CMOS
- IRIS F2.5
- FOV 160°
- Shutter Speed 1/30S
- Lens anti-shake EIS Anti-Shake
- Still Image Size 4000*3000 12M
- Photo Format JPEG
- Video Resolution 4K UHD:3840×2160 16:9
30fps; FHD:1920×1080 16:9 30fps
- Live Streaming Res 480/720/1080P
- Max Video Bitrate 2Mbps (Live) 12Mbps (Video)
- Video Format MP4(H264/H265)



APP

- Required Operating System IOS 9.0+/Android 5.0+

SENSOR

- IMU 6 axis gyro & accelerometer; 3 axis Compass
- Depth Sensor ±0.05m
- Temperature Sensor ±0.5°C
- Roll/Pitch Sensor Precision ± 1°
- Yaw Sensor Precision ± 1.5°

CABL

- Tension 50kg
- Length 150/200M
- Diameter 4.5mm



Address:
BUVI Scandinavia AB
Tvär-Ramsdal 1
SE - 611 99 TYSTBERGA

Contact:
Tel: +46 70 697 77 75
Mail: buvi@buviscandinavia.com
www.buviscandinavia.com